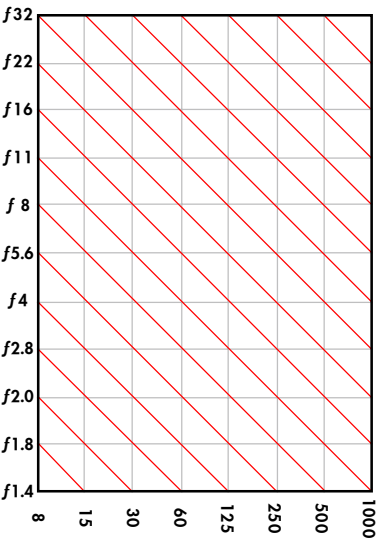


# Exposure Equivalencies



SUDA.CO.UK

©opyleft 2004

# Hyperfocal Distance

<b>Lens</b>	<b>f8</b>	<b>f11</b>	<b>f16</b>	<b>f22</b>	<b>f32</b>
20 mm	7'	5'	3.5'	2.5'	1.7'
24 mm	10'	7'	5'	3.5'	2.5'
28 mm	13'	10'	7'	5'	4'
35 mm	20'	15'	10'	8'	5'
50 mm	42'	30'	21'	15'	10'
80 mm	107'	78'	53'	39'	27'

SUDA.CO.UK

©opyleft 2004

# B&W Filters

## Red

Adjust: 3 Stops

- Spectacular Skys
- Brilliant Sunsets
- Reduce Haze
- Deeper Textures

## Deep Red

Adjust: 4 Stops

- Black Skys
- Reduce Haze

## Green-Yellow

Adjust: 2 Stops

- Natural Foliage
- Natural Outdoor Portraits

## Yellow

Adjust: 1 Stop

- Natural Effects to:
  - Sky
  - Marine water
  - Landscapes
  - Sunsets
  - Foliage
  - Portraits
  - Textures

## Deep Yellow

Adjust: 1 1/3 Stops

- Enhanced Effects to:
  - Darkened Sky
  - Darken Water
  - Brilliant Sunsets
  - Less Haze
  - Deeper Texture

## Blue

Adjust: 2 2/3 Stops

- Increase Haze

SUDA.CO.UK

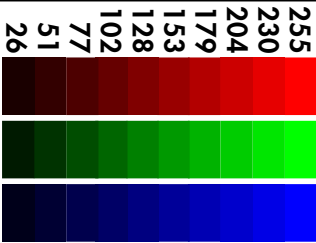
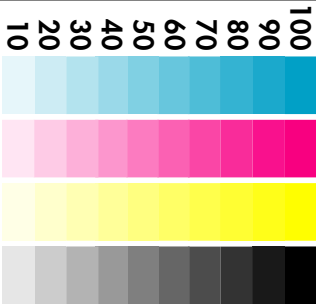
©opyleft 2004

100  
90  
80  
70  
60  
50  
40  
30  
20  
10  
00



SUQA.CO.UK

©opyleft 2004



SU<sup>2</sup>A.CO.UK

©opyleft 2004

## Exposure Value (EV)

- 6 Starlight only
- 5 1/4 Moonlight only
- 4 1/2 Moonlight only
- 3 Full Moon
- 2 Snowscape & Full Moon
- 1 Dim ambient artificial light
- 0 Dim ambient artificial light
- 1 Dim Distant City Lights
- 2 Lighting/edipse of moon
- 3 Fireworks
- 4 candles/christmas lights
- 5 Normal Indoor Lighting
- 6 fair/ amusement parks
- 7 Indoor sports/ sportlights
- 8 store windows/Nightclub
- 9 Spotlight Stage Acts
- 10 immediately after sunset
- 11 sunset in open shade
- 12 heavy overcast
- 13 cloudy-bright light no shade
- 14 weak hazy sun
- 15 bright hazy sun
- 16 bright daylight/sand/snow
- 17 man made light
- 18 man made light

## General Exposure

ISO	ISO 100	f/14	f/20	f/28	f/4	f/5.6	f/8	f/11	f/16	f/22
0	-1	2s	4s	8s	15s	30s	1m	2m	4m	6m
1	0	1s	2s	4s	8s	15s	30s	1m	2m	4m
2	1	1/2s	1s	2s	4s	8s	15s	30s	1m	2m
3	2	1/4s	1/2s	1s	2s	4s	<b>8s</b>	15s	30s	1m
4	3	1/8s	1/4s	1/2s	<b>1s</b>	2s	4s	<b>8s</b>	15s	30s
5	4	1/15s	1/8s	<b>1/4s</b>	<b>1/2s</b>	<b>1s</b>	2s	4s	8s	15s
6	5	1/30s	<b>1/15s</b>	1/8s	1/4s	1/2s	1s	2s	4s	8s
7	6	1/60s	<b>1/30s</b>	1/15s	1/8s	1/4s	1/2s	1s	2s	4s
8	7	1/125s	1/60s	<b>1/30s</b>	1/15s	1/8s	1/4s	1/2s	1s	2s
9	8	1/250s	1/125s	<b>1/60s</b>	<b>1/30s</b>	1/15s	1/8s	1/4s	1/2s	1s
10	9	1/500s	1/250s	<b>1/125s</b>	1/60s	1/30s	1/15s	1/8s	1/4s	1/2s
11	10	1/1000s	1/500s	1/250s	1/125s	1/60s	1/30s	1/15s	1/8s	1/4s
12	11	1/2000s	1/1000s	1/500s	1/250s	1/125s	1/60s	1/30s	1/15s	1/8s
13	12	1/4000s	1/2000s	1/1000s	1/500s	1/250s	1/125s	1/60s	1/30s	1/15s
14	13	1/8000s	1/4000s	1/2000s	1/1000s	1/500s	1/250s	1/125s	1/60s	1/30s
15	14	-	1/8000s	1/4000s	1/2000s	1/1000s	1/500s	1/250s	<b>1/125s</b>	1/60s
16	15	-	-	1/8000s	1/4000s	1/2000s	1/1000s	1/500s	<b>1/250s</b>	1/125s
17	16	-	-	-	1/8000s	1/4000s	1/2000s	1/1000s	1/500s	1/250s
18	17	-	-	-	-	1/8000s	1/4000s	1/2000s	1/1000s	1/500s
-	18	-	-	-	-	-	1/8000s	1/4000s	1/2000s	1/1000s

**RED** Shutter Speeds are the optimal settings for the (EV)

SUDA.CO.UK

©opyleft 2004